

# Medicare **GLP-1 BRIDGE**

A program giving qualifying Medicare members access to obesity treatments at a flat \$50/month.

## THE PATIENT JOURNEY ROADMAP



### Your Visit with Your Prescriber

#### Step 1: Start the Dialogue

Talk to your doctor. Let them know you are interested in a GLP-1 medication for obesity treatment and want to find out if you qualify.

#### Step 2: Check & Submit

Your doctor checks your eligibility. They will go over your health history and current vitals.

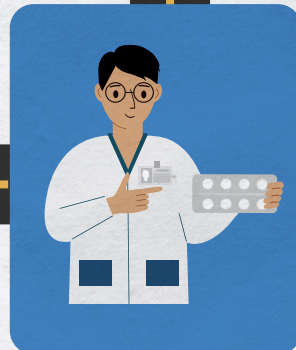
**Crucial Note:** Your doctor submits an approval request on your behalf directly to the pharmacy.



### Behind-the-Scenes Approval

#### Step 3: Fast-Track Review

Medicare's central processor reviews the prescription and the prior authorization form from your doctor. The central processor handles the approval and automatically sends the approval straight to your pharmacy.



### Your Pharmacy

#### Step 4: Filling & Checking Out

You pay \$50 per 30-day supply and pick up your prescription. Your Part D plan is not billed.

#### Step 5: Clinical Guidance

Your pharmacist will walk you through how to take the medication, what to watch for, and when to check back in.



### The Horizon

#### Step 6: Continuous Care

Ongoing support from your clinical team. They help manage your dose over time, flag any side effects, and handle renewal paperwork.

#### Step 7: Looking Ahead

Your doctor and pharmacist will seamlessly help you continue your coverage as CMS releases more details on how to get your prescriptions in the future.

#### Important Eligibility Info:

- You must have a Medicare Part D prescription drug plan or a Medicare Advantage prescription drug plan to qualify.
- The Bridge Program is intended for eligible beneficiaries who do not already have Medicare-covered access to a GLP-1 medication. If Medicare currently covers your GLP-1 prescription, you are not eligible for the program.
- For more on eligibility criteria: <https://bit.ly/4eqTtuF>

## WHAT'S COVERED



**Wegovy**  
• Injection or pill



**Zepbound**  
• KwikPen only



**Foundayo**

**\$50**

Per month,  
per 30-day supply  
Your Part D plan  
is not billed.

## MORE INFO

For additional details and the latest information, visit CMS at:

<https://bit.ly/3PNp28H>